



**BAGFAř BANDIRMA GÜBRE FABRİKALARI A.ř**  
**TERMİNAL BOOKLET**

REVİZYON:01  
TARİH: 01.04.2022



# **BAGFAř BANDIRMA GÜBRE FABRİKALARI A.ř.**

## **TERMİNAL INFORMATION BOOKLET**



**BAGFAŞ BANDIRMA GÜBRE FABRİKALARI A.Ş**  
**TERMİNAL BOOKLET**

REVİZYON:01  
TARİH: 01.04.2022

**PREFACE:**

The purpose of this Terminal Information Handbook is to outline the general nature of the terms and conditions, facilities, services and regulations applicable at the Terminal to the captains and owners of ships arriving at the Terminal. It does not replace other more verbose.

Furthermore, although reasonable care has been taken in its preparation, BAGFAŞ does not guarantee the accuracy of the information contained herein and is not responsible for the consequences of any party's use of it, regardless of purpose. The information given in this Terminal Information Booklet may be revised by BAGFAŞ from time to time. It is also the users responsibility to ensure that they are using the most current version of this Terminal Information Booklet.



## BAGFAŞ BANDIRMA GÜBRE FABRİKALARI A.Ş TERMİNAL BOOKLET

REVİZYON:01  
TARİH: 01.04.2022

### 1-LOCATION:

Lat:41°24.0'N - Long: 027°54.45'E at MARMARA SEA/TURKEY

Admiralty Chart 1006

### 2- PORT ADMINISTRATION:

Bandırma Harbour Master

Telephone:0.266 714 94 50

### 3-ARRIVAL INFORMATION:

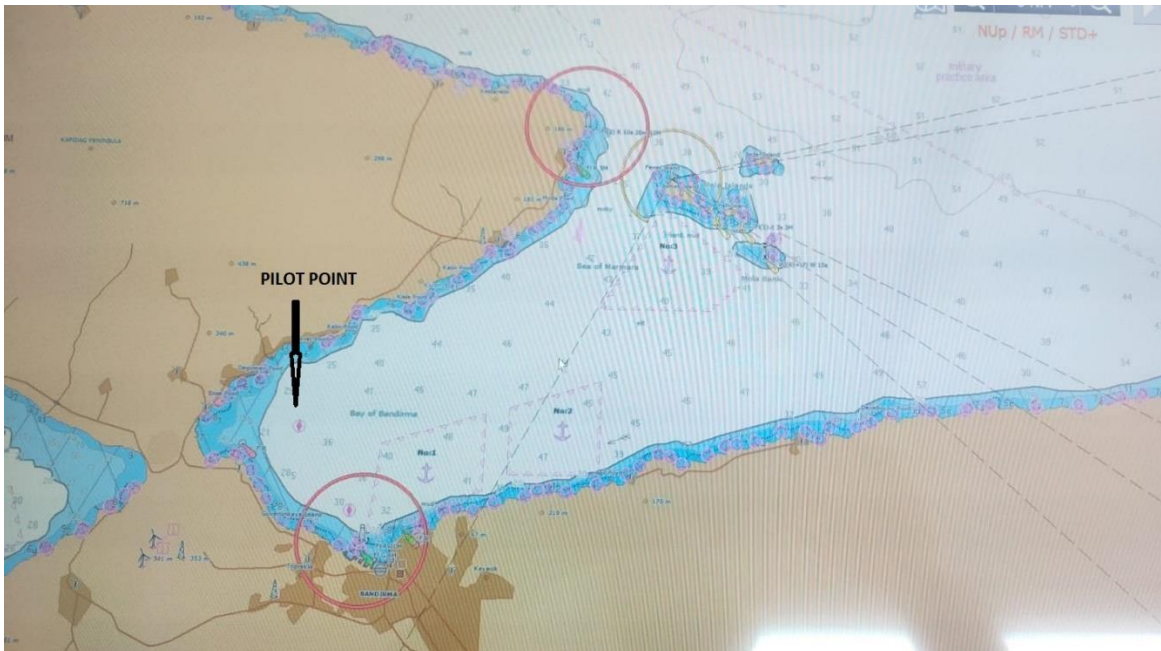
- Pre-arrival forms for agent
- Pre-arrival information from ship to terminal form(via agent)
- Pre-arrival questionnaire form for tankers(via agent)

### 4-PILOTAGE INFORMATION:

2 tugs available (BADETAŞ I – BADETAŞ II)

1 mooring boat available

Pilot VHF Channels: 16-74





## BAGFAŞ BANDIRMA GÜBRE FABRİKALARI A.Ş TERMİNAL BOOKLET

REVİZYON:01  
TARİH: 01.04.2022

Pilot boarding ground: Lat:41°23.4'N - Long: 027°55'E

For anchoring,3 anchorage areas are available.Please contact with Bandırma VTS on Ch:12

Max manouver speed 2 knots.

### 5-DEPTH AT PIER AND APPROACHING

There is no channel at approaching.

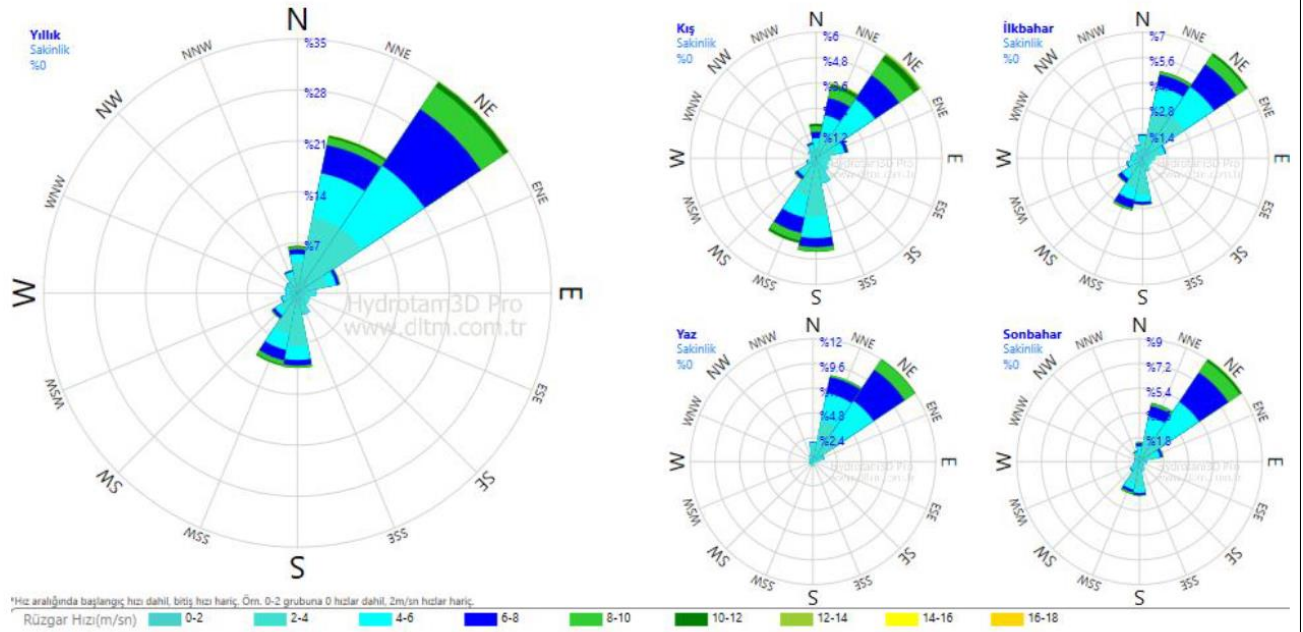
Min depth at Pier no#2 11,0 m

Dock Density between 1,013 -1,021 kg/l (according weather condition and current)

Distance from sea level to bottom of pier 3,8 m

### 6-WIND CONDITION

Wind condition for all season at region.



Çizim 4.3 ECMWF Operasyonel Arşiv 40,4°N –28°E koordinatı 2000-2019 yılları arası verilerine göre rüzgar gülleri



**BAGFAŞ BANDIRMA GÜBRE FABRİKALARI A.Ş**  
**TERMİNAL BOOKLET**

REVİZYON:01  
TARİH: 01.04.2022

## **7-TERMINAL PARTICULARS**

### **Pier #2**

#### **For loading solid bulk:**

There is a ship loader on pier. Working range abt 60 m paralel length. Ships may be asked to shift on the rope. Ship loader air draft is 9,5 m. Loading plan must be prepared according to 1 loader. Avarage loading rate 300 mt/h. Ship loader has a trimmer at the end that can be turned 360 degrees.

#### **For loading/discharging liquid bulk**

##### **For acid loading/discharging:**

1pcs 6 inch sulphuric acid flange

1pcs 6 inch phosphoric acid flange

Loading/discharging rate abt 300 mt/h for acids.

Max pressure 7 bars at ship manifold. Initial pressure 2 bars.

Terminal use ship hoses for loading and discharging all time. Min 12-18 mtr need according to ship size and berthing situation and weather effects.

Terminal no have hoses.

##### **For discharging ammonia:**

Ammonia arm flange 8 inch ANSI type 300

Ammonia arm max distance from sea level 14,0 m

Max pressure 7 bars at ship manifold. Initial pressure 2 bars.

Discharging avarage rate 500 mt/h



**BAGFAŞ BANDIRMA GÜBRE FABRİKALARI A.Ş**  
**TERMİNAL BOOKLET**

REVİZYON:01  
TARİH: 01.04.2022

**Pier # 3**

**For discharging solid bulk:**

1 pc gantry slewing Crane with articulated luffing jib system 20T X 30...8m

Air draft 18 m

Discharging rate abt 200 mt/h

**8-GARBAGE OPERATIONS**

Garbage facility is available. Please contact with KINAY agent according to pre-arrival forms.

**9-SMOKING AND NAKED LIGHTS**

Smoking is strictly prohibited in the jetty area and on board vessels alongside.

Naked lights are strictly prohibited in the jetty area and on board vessels alongside.

**10-GANGWAY**

The ship must provide a suitable accommodation ladder or gangway brow and supply and fit a  
Suitable safety net.

**11-DRAFT SURVEY AND ULLAGE-SAMPLING**

Draft survey will be done all loading/discharging bulk cargo. Ship must provide approved/not expired  
data books to surveyor.

Ullage survey will be done all liquid cargo. Ship must provide approved/not expired data books to  
Surveyor.

**12-TANK CLEANING, GAS FREEING**

Tank cleaning and gas freeing are not allowed at pier.



**BAGFAř BANDIRMA GÜBRE FABRİKALARI A.ř**  
**TERMİNAL BOOKLET**

REVİZYON:01  
TARİH: 01.04.2022

**13-CONTACT NUMBERS**

NAME	NAME/ADDRESS	CONTACT
Terminal	Bandırma Bagfař Fertilizer Factory	+90 266 714 10 00
Terminal Manager	Bandırma Bagfař Fertilizer Factory Mr.Halit KAMBUR	+90 266 714 10 00-381 +90 549 812 88 13 halit.kambur@bagfas.com.tr
Harbour Master	Bandırma Harbour Master	+90 266 714 94 50
PFSO	Bandırma Bagfař Fertilizer Factory Mr. Halit KAMBUR	+90 266 714 10 00-381 +90 549 812 88 13 halit.kambur@bagfas.com.tr
Agent	Ali Rıza Kınay Shipping Agency Add:Mehmet Akif Ersoy Cad. Kınay Building No:5 BANDIRMA	+90 266 715 57 00 Bandirma.Agency@Kinay.com
Pilot Station	Badetař Pilot Station	+90 266 738 14 24 Vhf: 16 / 74
Police	Bandırma Marine Police Station	Phone:155 +90 266 714 21 41
Fire Department	Bandırma Fire Brigade	Phone:110 +90 266 718 70 13
Medical Assistance	Bandırma State Hospital	+90 266 714 27 80
Custom	Bandırma Custom	+90 266 714 10 08